



INNOVATION SCHOLARS PROGRAM

a human-centered approach to innovating in African higher education



UNITED STATES AGENCY FOR
INTERNATIONAL DEVELOPMENT



GLOBAL CENTER FOR FOOD
SYSTEMS INNOVATION



LILONGWE UNIVERSITY OF AGRICULTURE
AND NATURAL RESOURCES

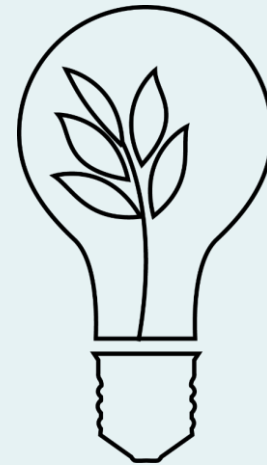
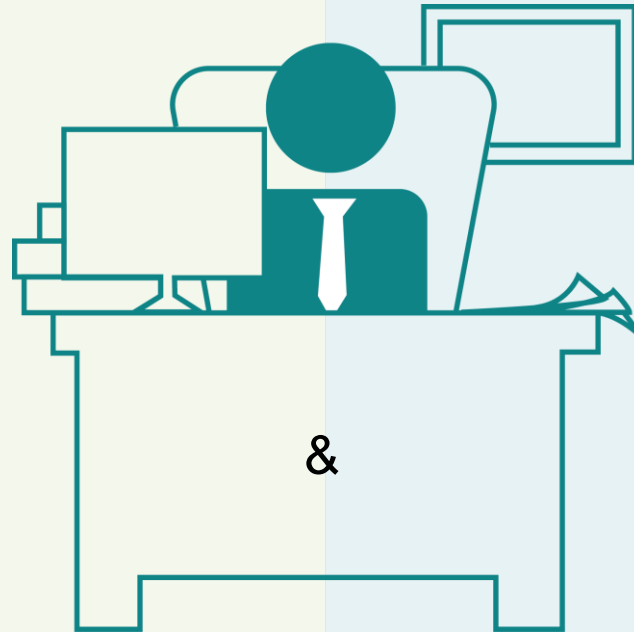
Meet **Andy**,
a Department head at a University in Africa.



Andy faces the ongoing demand of



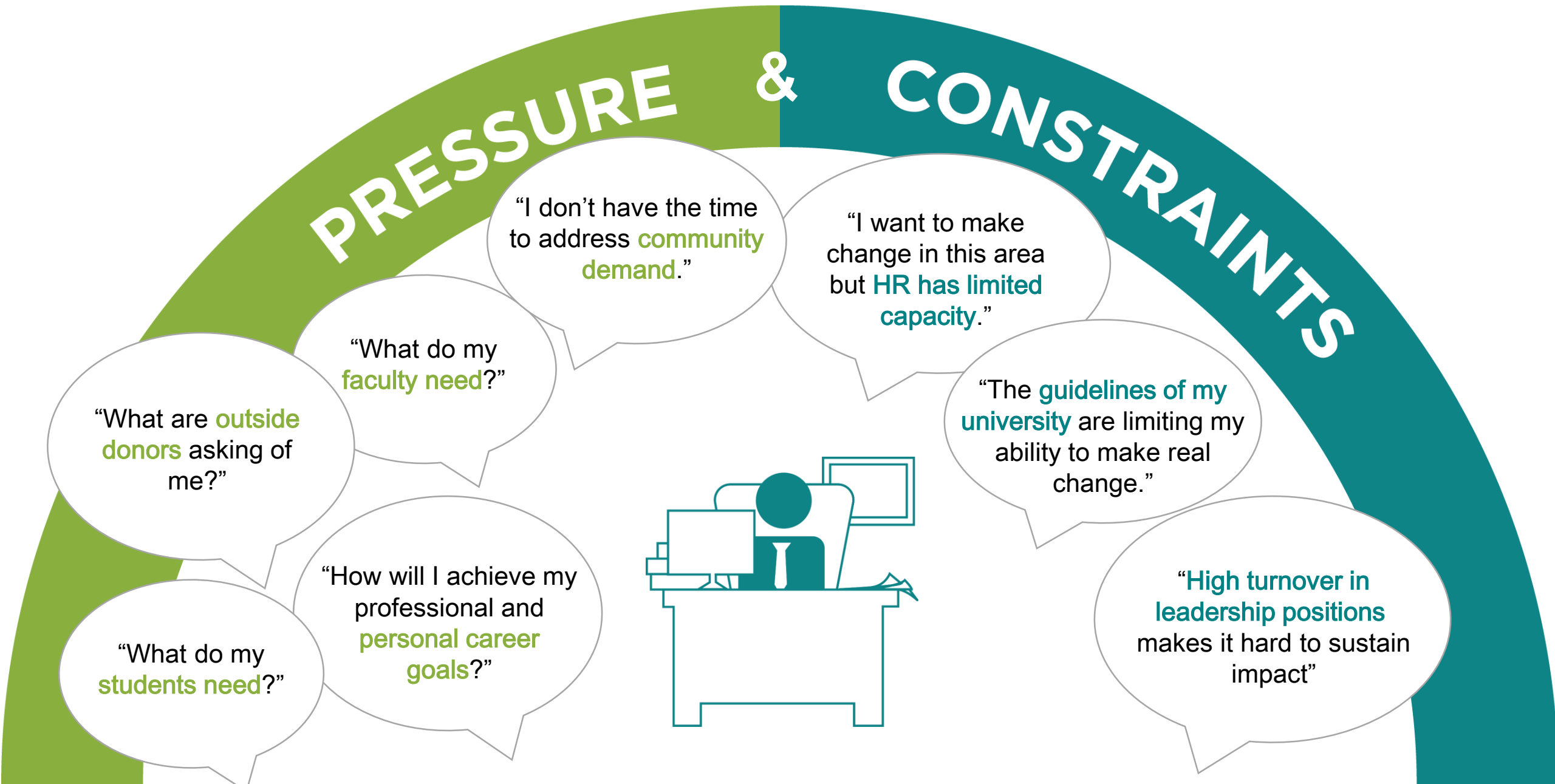
RESOLVING PROBLEMS



PRODUCING INNOVATIONS

to help his country prosper long term.

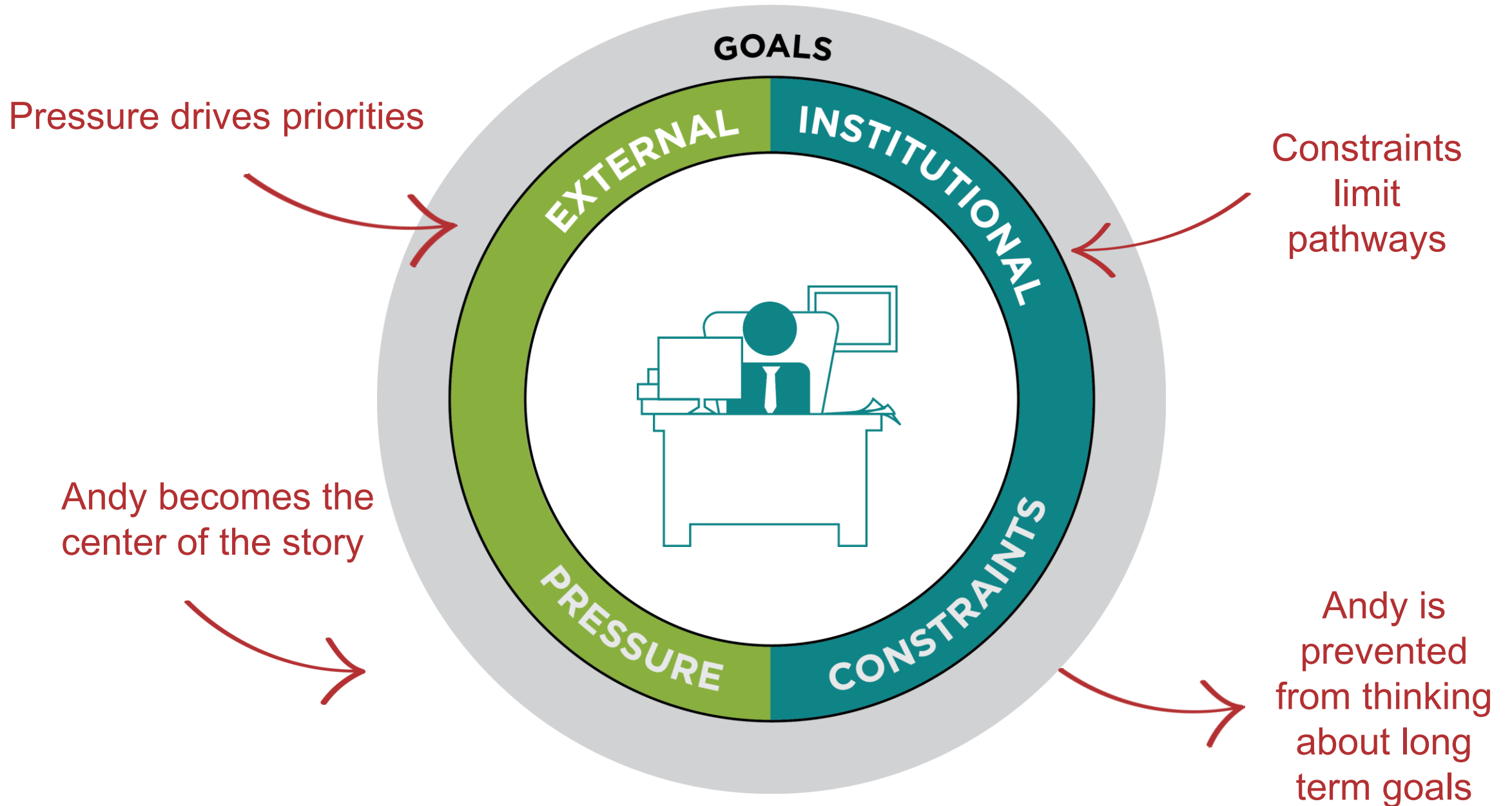
With each demand, Andy is met with a variety of:

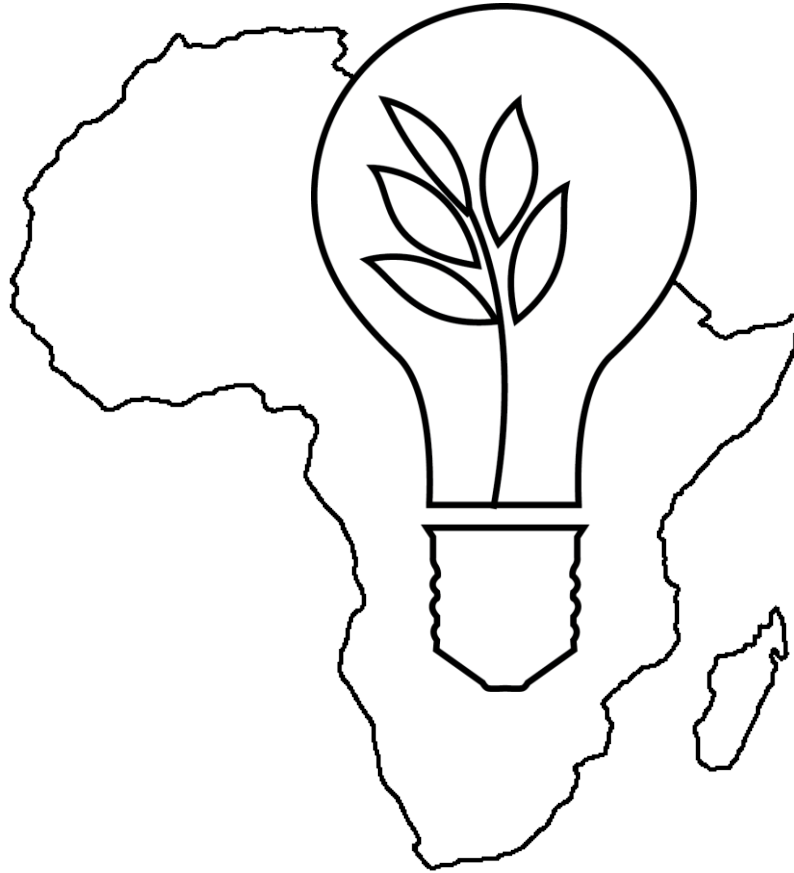


External pressures and institutional constraints direct Andy toward a career centered on the question:



In this higher education context:





As a result, few African communities access opportunity for transformative change.

What will it take
to break this
cycle?

How might we
co-create long-term
transformative change
with and *for* people?



In 2016, the **Global Center for Food Systems Innovation**, a lab at Michigan State University, and **Lilongwe University of Agriculture and Natural Resources**, a University in Malawi, set out to answer these questions.

THE PROBLEM:

Food Security in Africa



POPULATION

The world population is projected to reach 8.5 billion by 2030 and 9.7 billion in 2050.



ARABLE LAND

Worldwide arable land is projected to shrink to 585 million hectares by 2050.



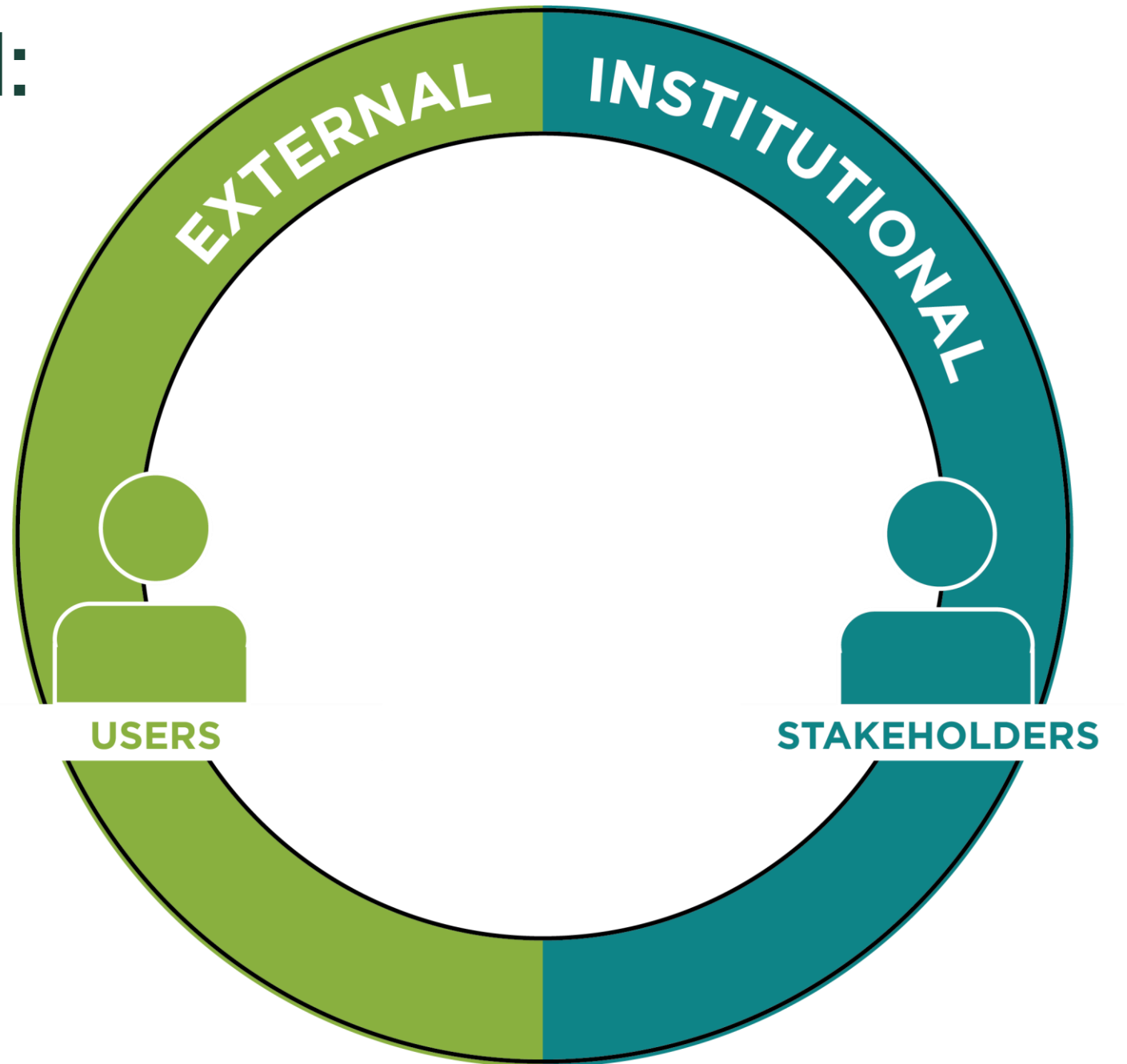
FOOD DEMAND

Global food demand in 2050 is expected to increase by at least 60%.

THE APPROACH:

People

If we want to break the cycle, we have to start with people *in* the cycle:



THE CHALLENGE:

Process

If we want to help Andy do things differently, we have to be willing to do things differently:

How do we
actually do that?

Start with the “what” not the how.



- **Human-centered**
LUANAR faculty and MSU experts working together.
- **Measurable**
Using evidence driven practices.
- **Adaptive**
Committing to respond to LUANAR's needs even as they change.

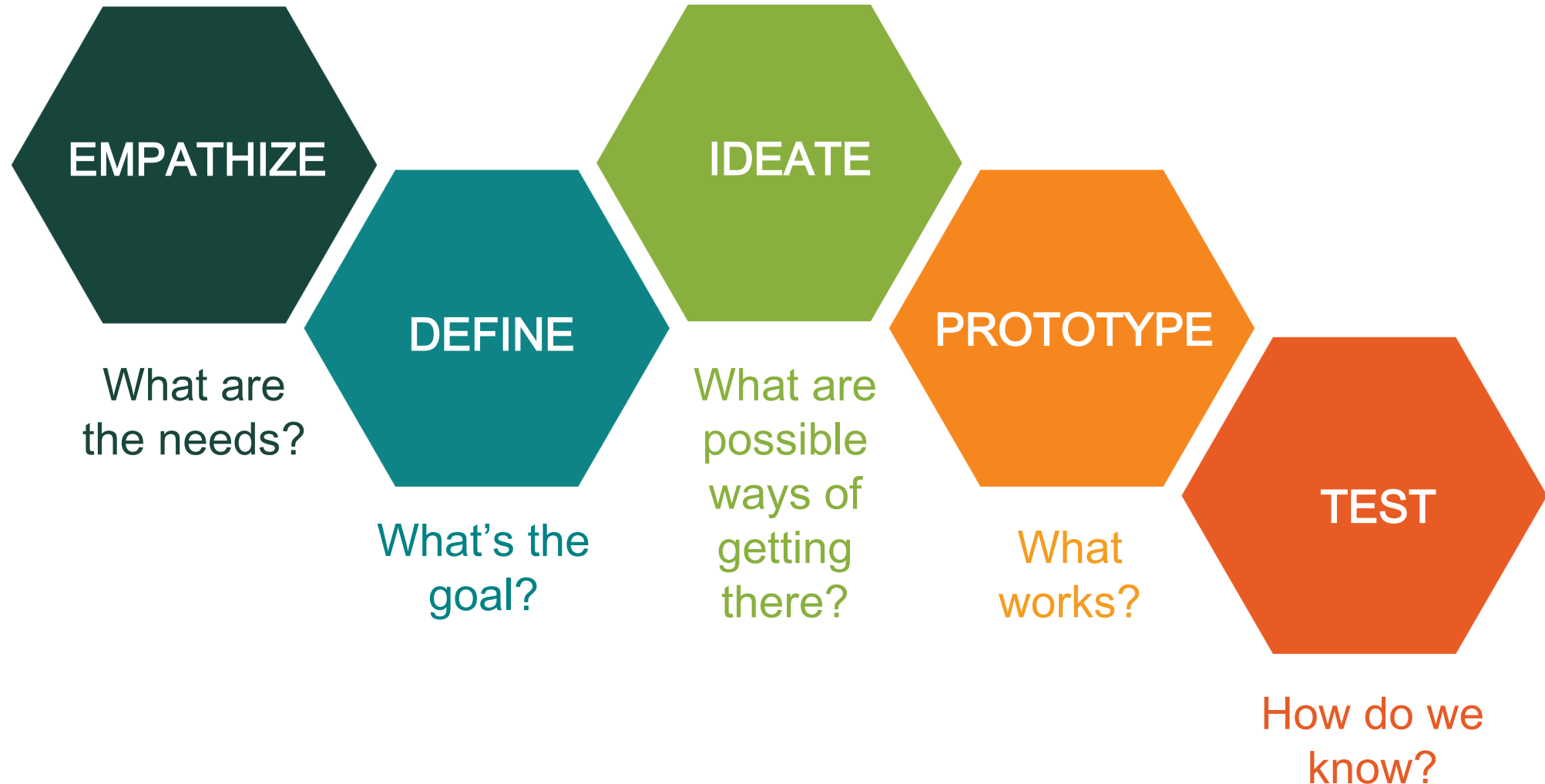


Say hello to Andy.

We didn't tell him to be innovative, we gave him a path, a methodology and a means and space to practice.

THE METHODOLOGY:

Human-centered design



THE PATH:

Human-centered development



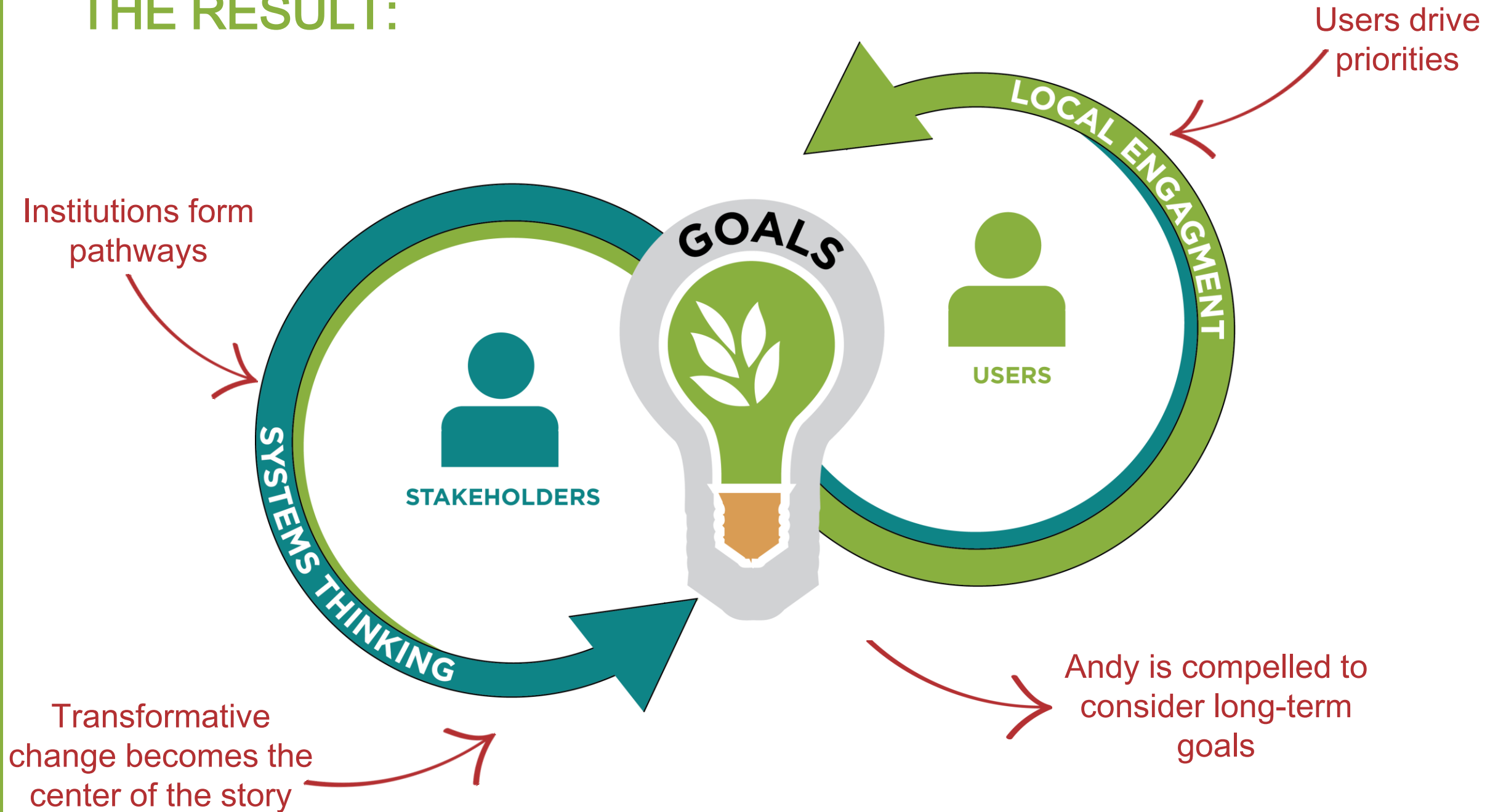
THE PRACTICE:



INNOVATION SCHOLARS PROGRAM

- 9 faculty and 8 university leaders
- 6 in-country workshops
- 15 months of applied learning and feedback

THE RESULT:

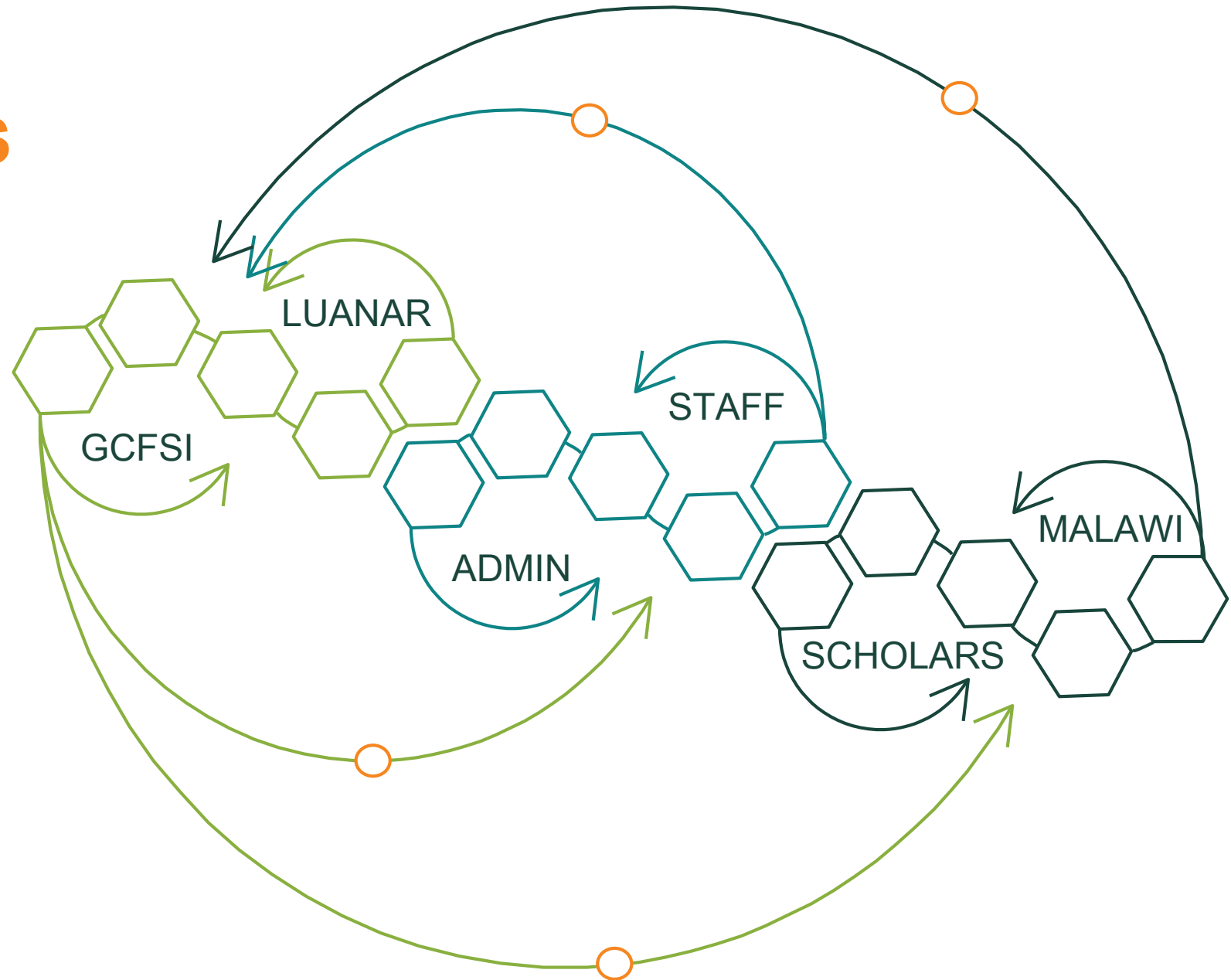


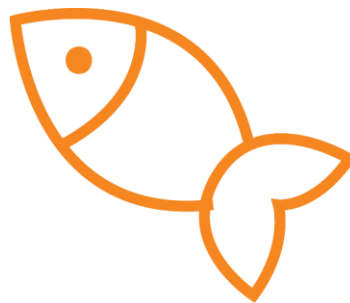
What is the
impact?

What did this look like in
practice?

Accelerating feedback loops

- *weekly planning meetings*
- *periodic assessment of goals*
- *project updates from scholars*
- *regular coaching meetings*
- *workshop artifacts and field notes*
- *written reflections post-workshop*





Developing and testing innovations in 10 unique areas

Cassava Virus Detection

Water Management

Fish Processing

Leadership Development

Goats

Indigenous Vegetables

Agribusiness Experiential Education

Oil Seeds

Digital Storytelling

Veterinary Medicine Gaming App

A portrait of Dr. Sera Gondwe, a Black woman with short dark hair, wearing a black headband, black-rimmed glasses, and a black scarf over a white top. She is smiling and looking slightly to the right. The background is a blurred outdoor setting with greenery and a tree. An orange vertical bar is on the left side of the image.

Bridging the gap between classroom and community

Dr. Sera Gondwe

Transforming institutional leadership



Community-driven innovation—

Learning from local farmers

INDIGENOUS PLANTS

Dr. Abel Sefasi

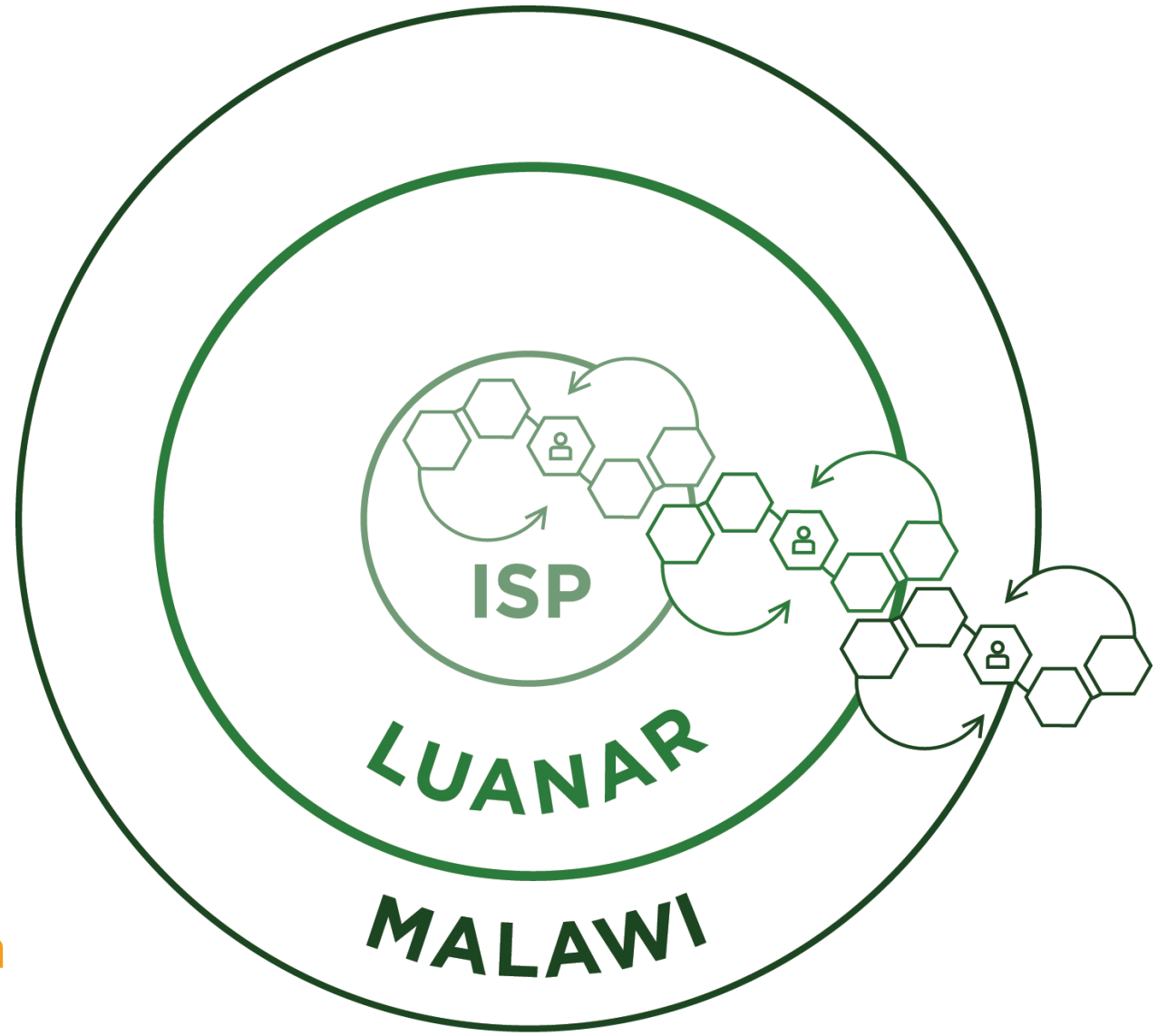


Scaled Impact through people

Individual students and faculty

University leadership

Community driven innovation



How can your university use
human-centered approaches to
co-create long-term,
transformative change *with*
and *for* people?

Contact us!

gcfsi.isp.msu.edu



Work is licensed under Creative Commons
Attribution-NonCommercial 4.0 International License.

Slide deck design by Libby Hoffman, for GCFSI.



Thank you.



UNITED STATES AGENCY FOR
INTERNATIONAL DEVELOPMENT



GLOBAL CENTER FOR FOOD
SYSTEMS INNOVATION



LILONGWE UNIVERSITY OF AGRICULTURE
AND NATURAL RESOURCES